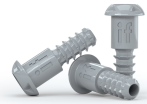
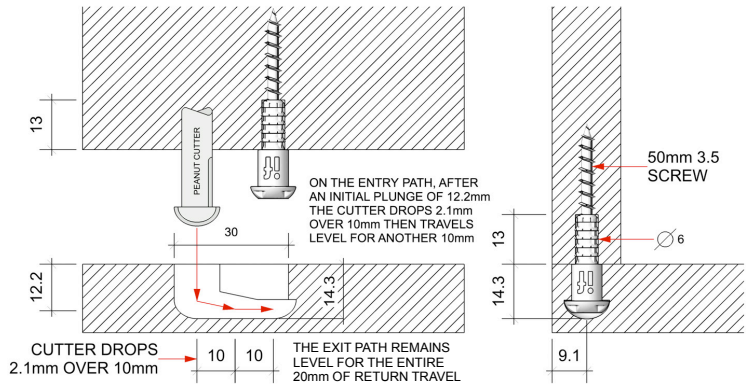
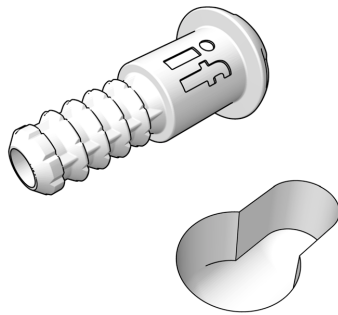


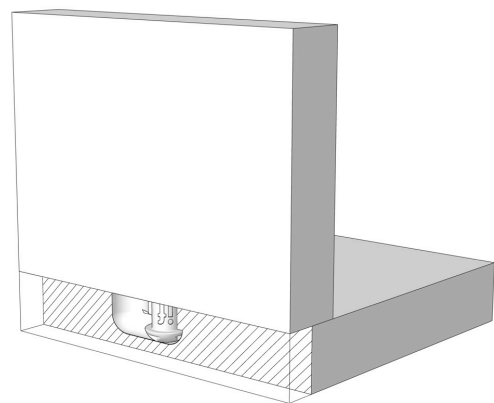
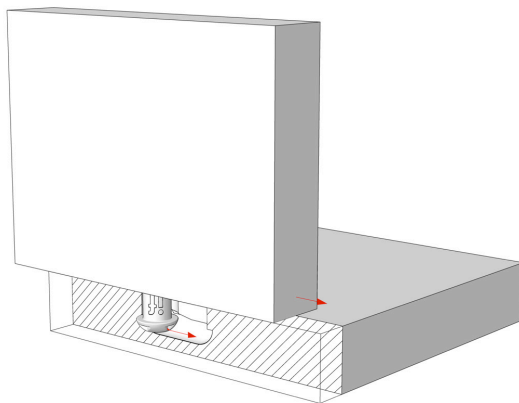
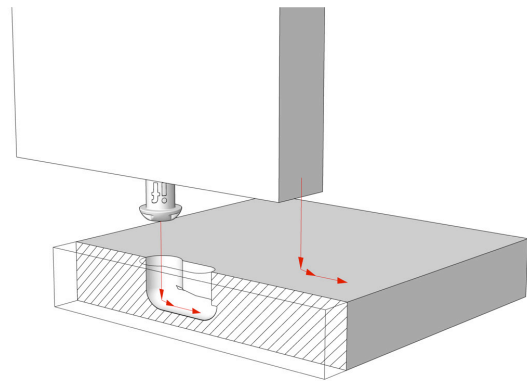
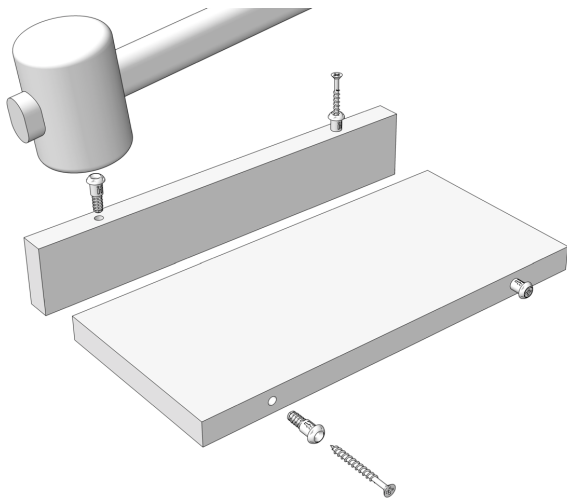
# PEANUT® 2



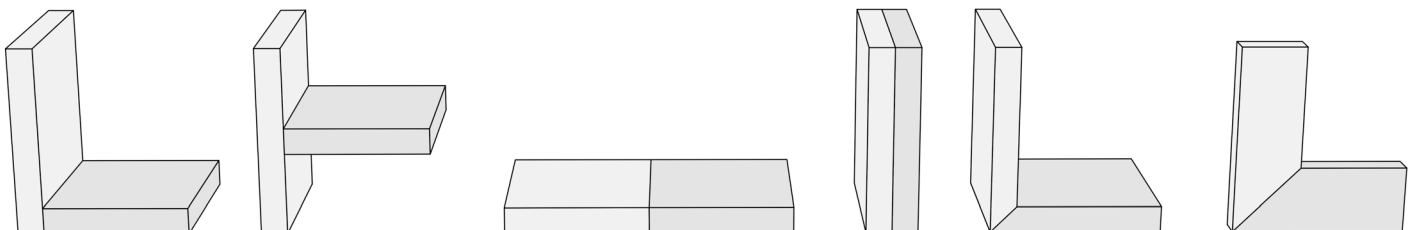
## MECANIZADO



## ENSAMBLAJE



## APLICACIONES



# PEANUT® 2

## ESPECIFICACIONES TÉCNICAS



### PEANUT® 2 Technical data

<b>COMPONENT COMPOSITION</b>	GLASS-FIBRE REINFORCED PLAST
<b>MATERIAL THICKNESS</b>	>15.3MM
<b>TOLERANCE (PEANUT® CUTTER SLOT)</b>	+0.3mm and -0.4mm (DEPTH)

### Strength Data

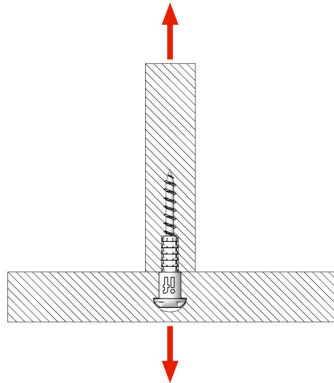


Fig. A

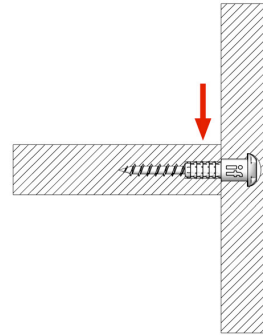


Fig. B

### PEANUT® 2 Tensile strength (based on 1 component):

TESTED BY:



MATERIAL	TENSILE STRENGTH (Fig. A)
PARTICLE BOARD (18mm MFC) from EGGER	900 N / 90 KG (1 COMPONENT)
MDF (18mm)	1000 N / 100 KG (1 COMPONENT)

### PEANUT® 2 Shear strength (based on 1 component):

TESTED BY:



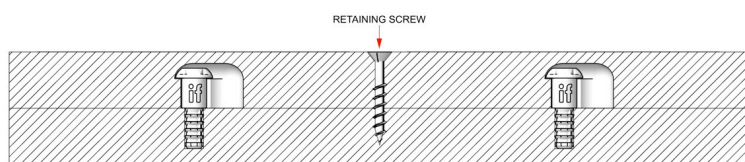
MATERIAL	SHEAR STRENGTH (Fig. B)
PARTICLE BOARD (18mm MFC) from EGGER	670 N / 67 KG (1 COMPONENT)
MDF (18mm)	930 N / 93 KG (1 COMPONENT)

PLEASE NOTE THAT THE STRENGTH MAY VARY DEPENDING ON MATERIAL AND QUALITY OF MATERIAL USED.

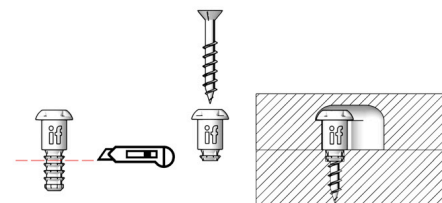
### PEANUT® 2 TOOLING REQUIREMENTS:

<b>IF SOLID CARBIDE PEANUT CUTTER</b>	MAX RPM 14000	CREATES 6500+ SLOTS (BASED ON MELAMINE FACED PARTICLE BOARD) THIS TOOL CANNOT BE SHARPENED
<b>6mm SOLID CARBIDE DRILL</b>		ANY 6mm DRILL WILL WORK (WE HAVE A SOLID CARBIDE DRILL GIVES BEST RESULTS)

### PEANUT® 2 OTHER APPLICATIONS:



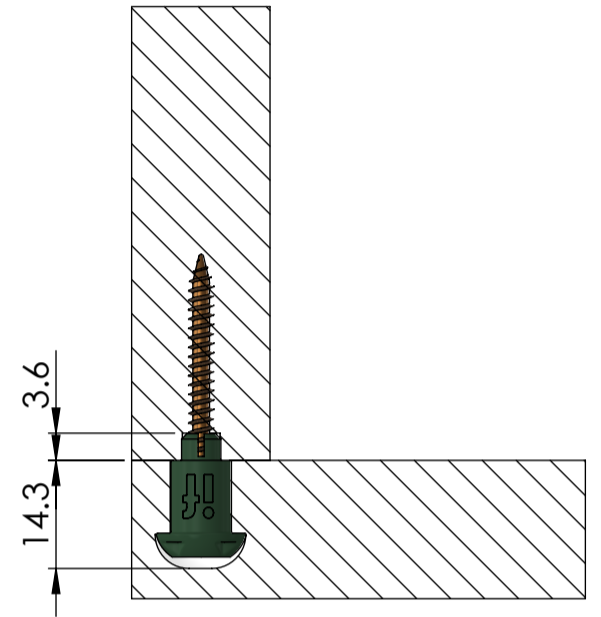
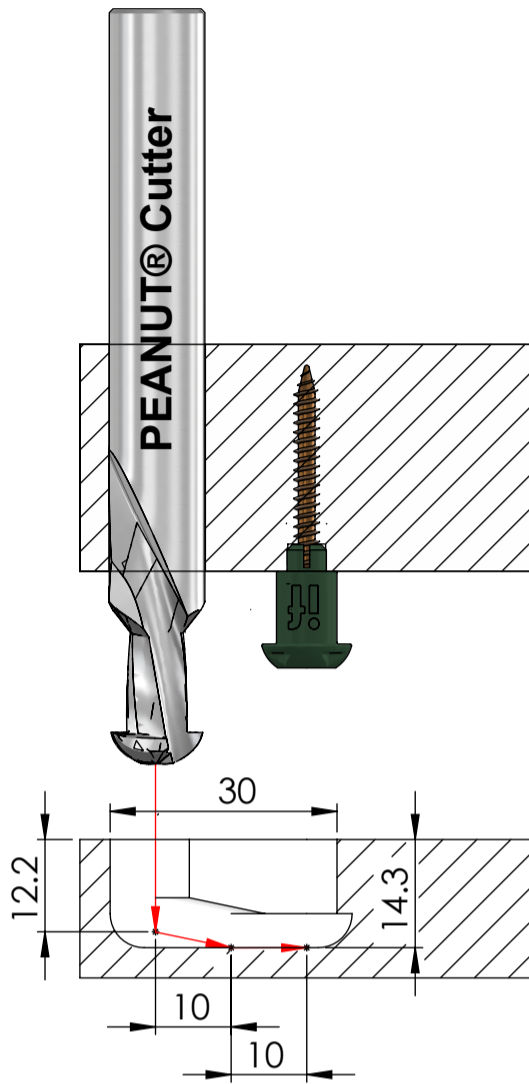
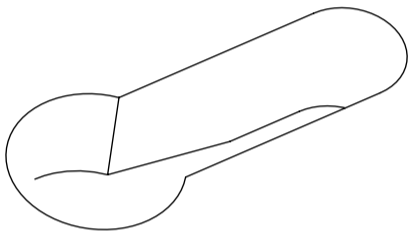
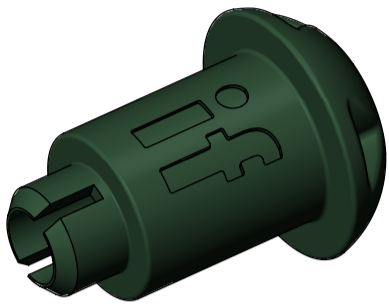
Use the **PEANUT® 2** without the 50mm screw for non-structural location and alignment of drawer fronts, side panels and other work pieces face to face.



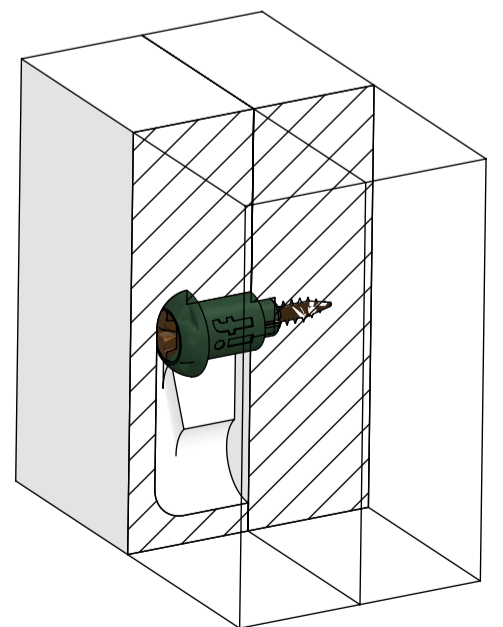
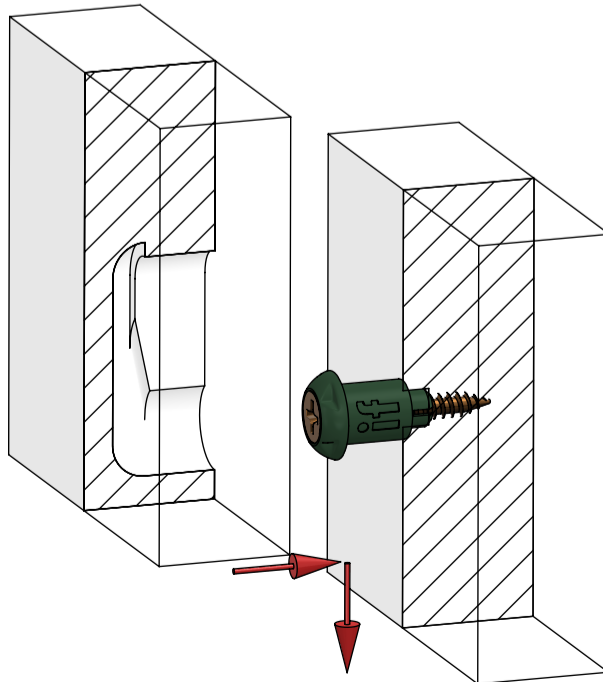
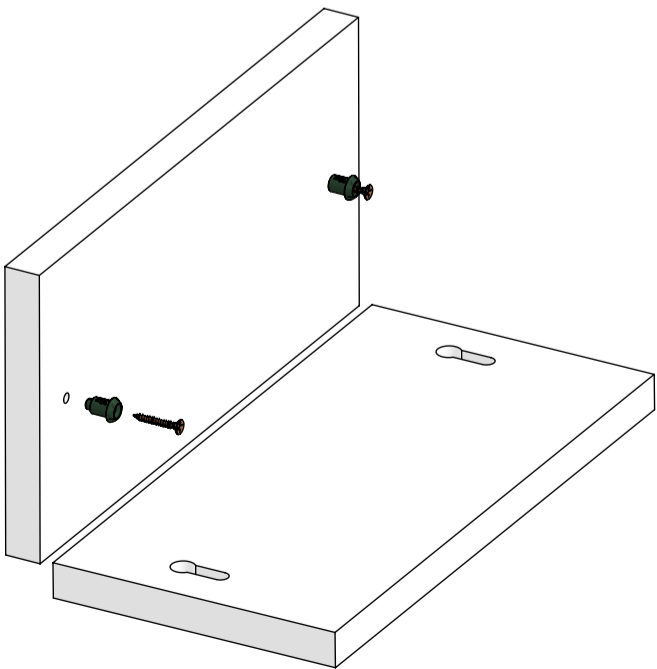
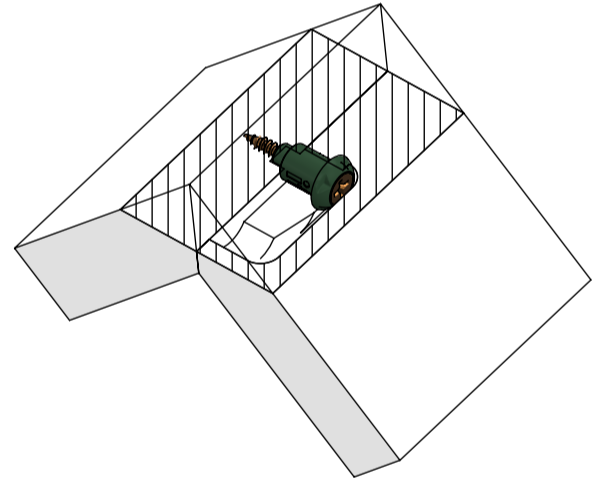
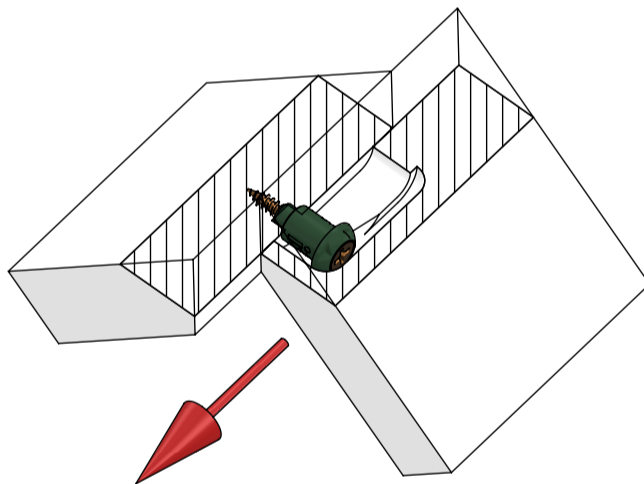
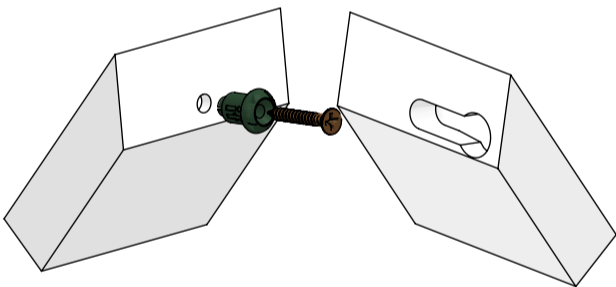
CUT P2 DOWN  
Cut down and use with shorter screws for a more permanent face to face solution.

# PEANUT® 2 SHORT

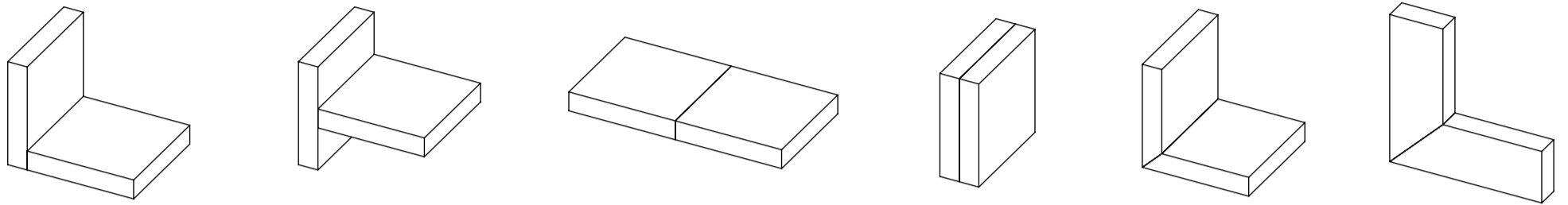
## MECANIZADO



## ENSAMBLAJE



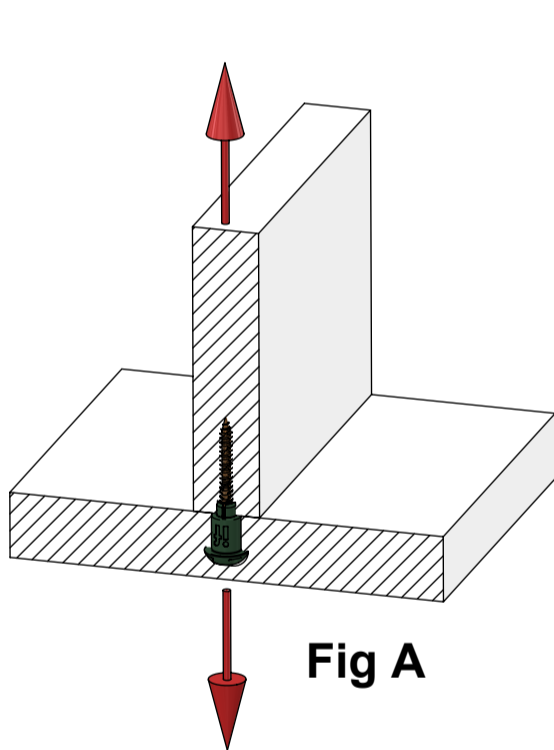
**APLICACIONES**



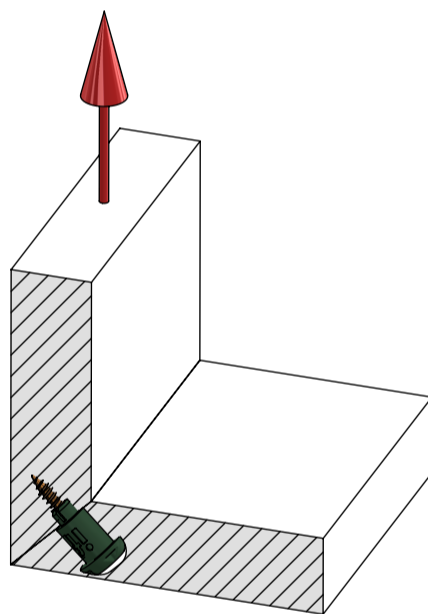
**ESPECIFICACIONES TÉCNICAS**

**PEANUT® 2 SHORT Technical data**

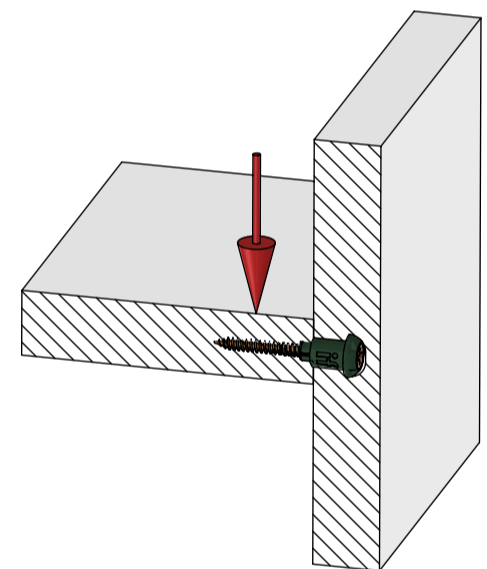
<b>COMPONENT COMPOSITION</b>	<b>GLASS-FIBRE REINFORCED PLASTIC</b>
<b>MATERIAL THICKNESS</b>	<b>90° Joint: &gt;15.3mm    45° Joint: &gt;18mm</b>
<b>TOLERANCE (PEANUT CUTTER SLOT)</b>	<b>+0.3mm -0.4mm (DEPTH)</b>



**Fig A**



**Fig B**



**Fig C**

Tested by:

Tested by:

**PEANUT® 2 SHORT** Tensile/shear strength (based on one component) with 3.5mm counter sunk wood screw

<b>MATERIAL</b>	<b>TENSILE 90° (Fig A)</b>	<b>TENSILE 45° (Fig B)</b>	<b>SHEAR STRENGTH (Fig C)</b>
<b>PARTICLE BOARD (18mm MFC)</b>	860N / 86KG	460N / 46KG	670N / 67KG
<b>MDF (18mm)</b>	1010N / 101KG	650N / 65KG	930N / 93KG

**PEANUT® 2 SHORT** Tooling requirements

<b>IF SOLID CARBIDE PEANUT CUTTER</b>	<b>MAX RPM 14000</b>	<b>CREATES 6500+ SLOTS (BASED ON MELAMINE FACED PARTICLE BOARD) THIS TOOL CANNOT BE SHARPENED</b>
<b>5mm SOLID CARBIDE DRILL</b>		<b>ANY 5mm DRILL WILL WORK (WE HAVE FOUND A SOLID CARBIDE DRILL GIVES BEST RESULTS)</b>