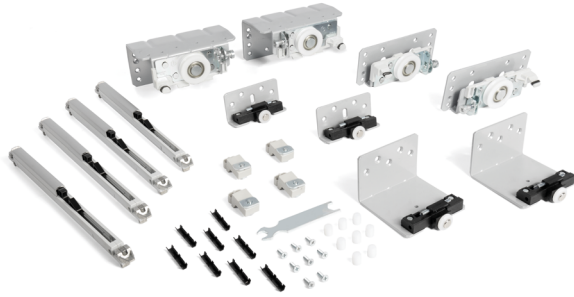



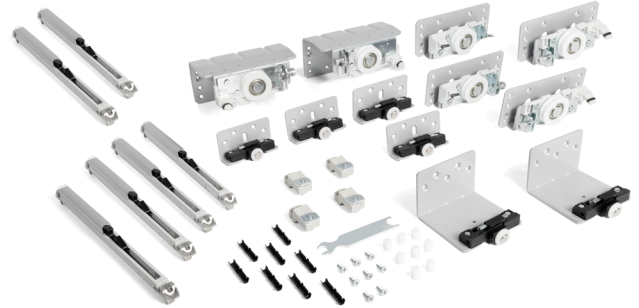
## Kit STAR FLUID para 2 puertas SP28-40




2 puertas

CÓDIGO	Espesor(A)	Acabado	
1058.351	28	plata mate	1kit
1058.352	40	plata mate	1kit

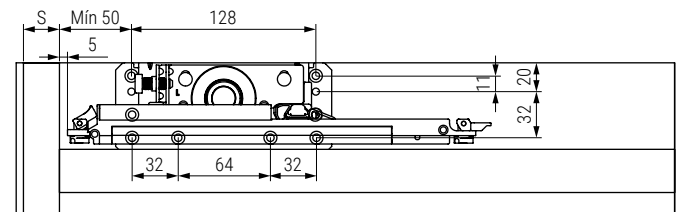
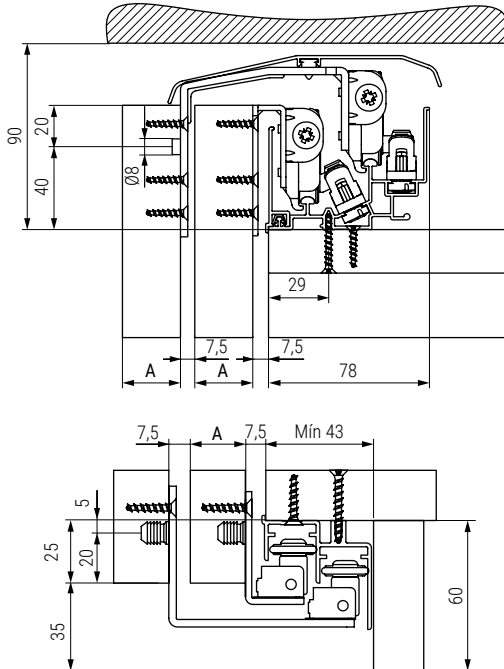
## Kit STAR FLUID para 3 puertas SP28-40



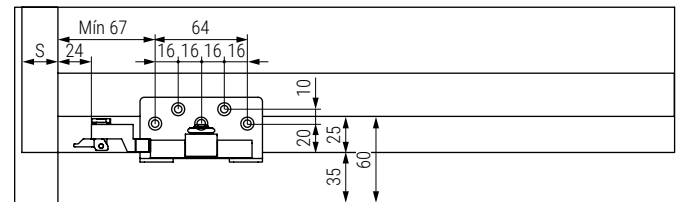
3 puertas

CÓDIGO	Espesor(A)	Acabado	
1058.353	28	plata mate	1kit
1058.354	40	plata mate	1kit

## Medidas y mecanizados



S= espesor del costado del mueble



S= espesor del costado del mueble

