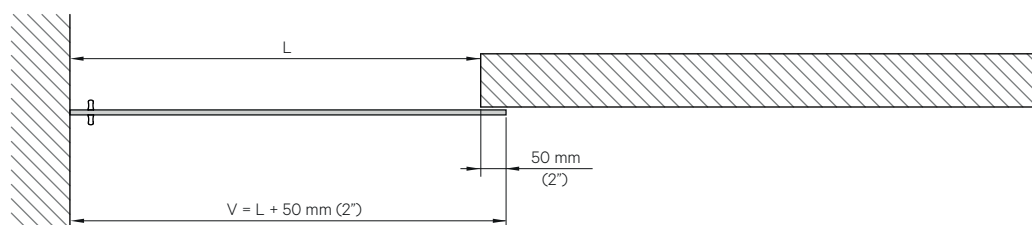
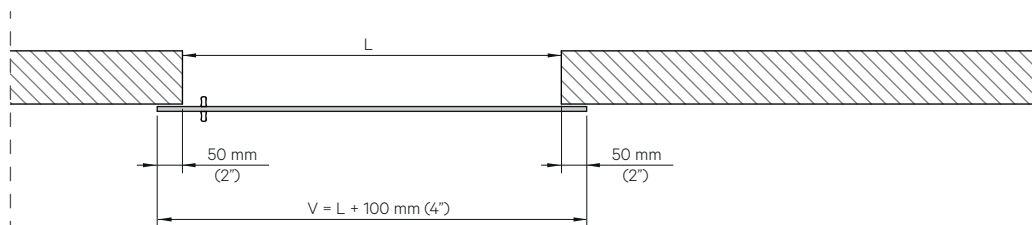
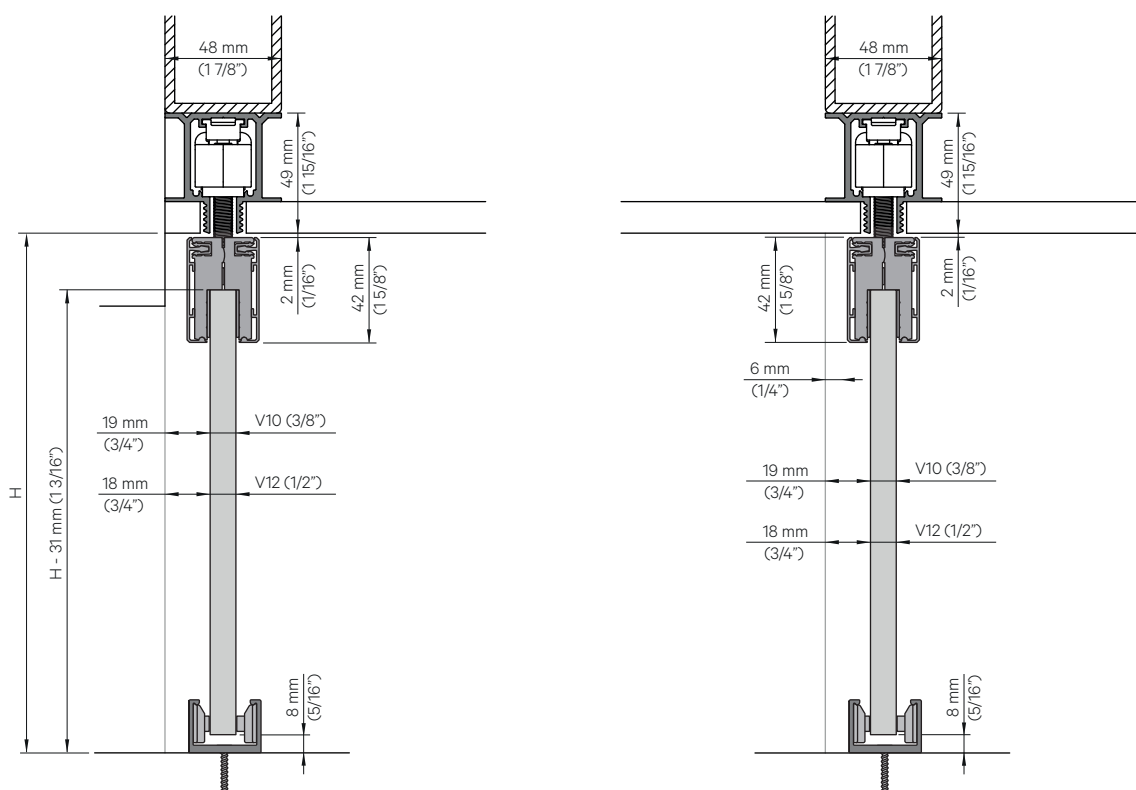




LITE GLASS+ “T”

Puertas correderas de vidrio
Glass Sliding Doors

1 INSTALACIÓN / INSTALLATION



$V \geq 750 \text{ mm (29 1/2")}$

2 INFORMACIÓN DE SEGURIDAD (EUROPA) SAFETY INFORMATION (EUROPE)

El vidrio fijo y el vidrio de la puerta corredera deben cumplir con las normas:

- UNE EN 572-2:2012 Vidrio para la edificación. Productos básicos de vidrio de silicato sodocálcico. Parte 2: Vidrio plano.
- UNE EN 12150-1:2016 Vidrio para la edificación. Vidrio de silicato sodocálcico de seguridad templado térmicamente. Parte 1: Definición y descripción.
- UNE EN ISO 12543-1/6:2011 Vidrio para la edificación. Vidrio laminado y vidrio laminado de seguridad.

Fixed glass and sliding glass door must meet the requirements of:

- UNE EN 572-2:2012 Glass in building. Basic soda lime silicate glass products. Part 2: Float glass.
- UNE EN 12150-1:2016 Glass in Building. Thermally toughened soda lime silicate safety glass. Part 1: Definition and description.
- UNE EN ISO 12543-1/6:2011 Glass in building. Laminated glass and laminated safety glass.

3 INFORMACIÓN DE SEGURIDAD (USA) / SAFETY INFORMATION (USA)

El vidrio fijo y el vidrio de la puerta corredera deben cumplir con las normas:

- ASTM C1036-16 Standard Specification for Flat Glass
- ASTM C1048-12e1 Standard Specification for Heat-Strengthened and Fully Tempered Glass
- ASTM C1172-14 Standard Specification for Laminated Architectural Flat Glass

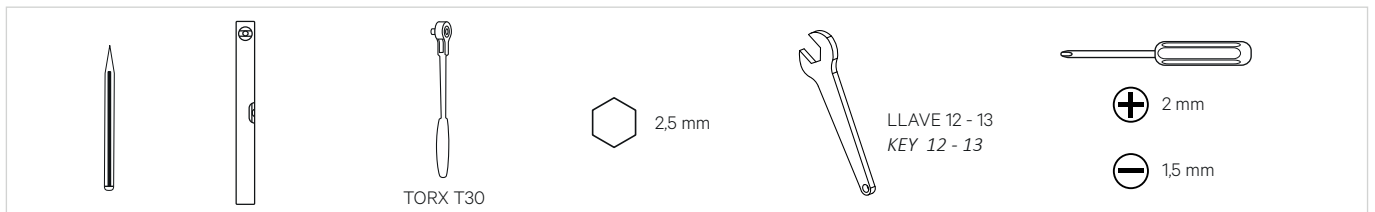
El rango de espesor admitido para el vidrio fijo y el vidrio de la puerta corredera en espesores de 1/2" va de 11.91mm a 12.70mm.

Fixed glass and sliding glass door must be in compliance with the following regulations:

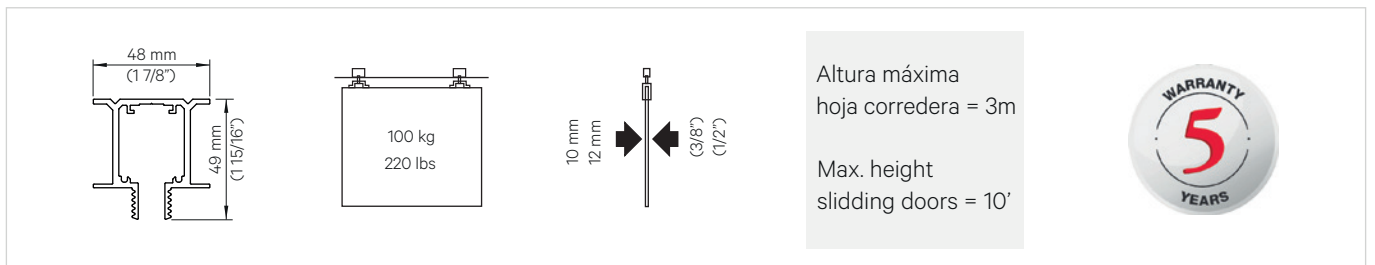
- ASTM C1036-16 Standard Specification for Flat Glass
- ASTM C1048-12e1 Standard Specification for Heat-Strengthened and Fully Tempered Glass
- ASTM C1172-14 Standard Specification for Laminated Architectural Flat Glass

For fixed glass, and for sliding glass door, acceptable 1/2" glass thickness range must be within 11.91mm and 12.70mm.

4 HERRAMIENTAS NECESARIAS / REQUIRED TOOLS



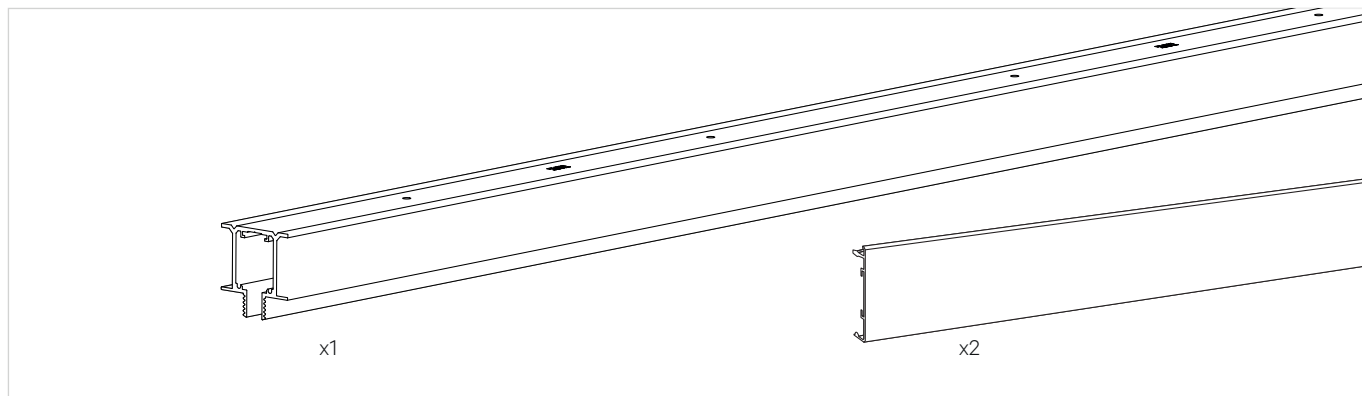
5 INFORMACIÓN GENERAL / GENERAL INFORMATION




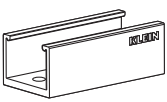

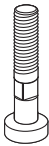
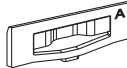


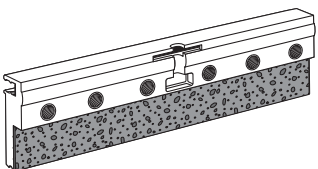
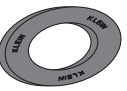

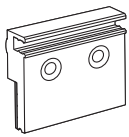


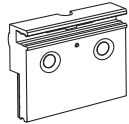
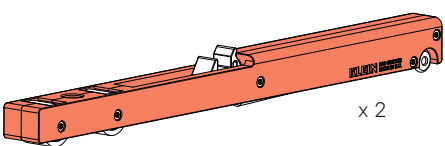

6 ELEMENTOS DE LA INSTALACIÓN / ITEMS OF INSTALLATION



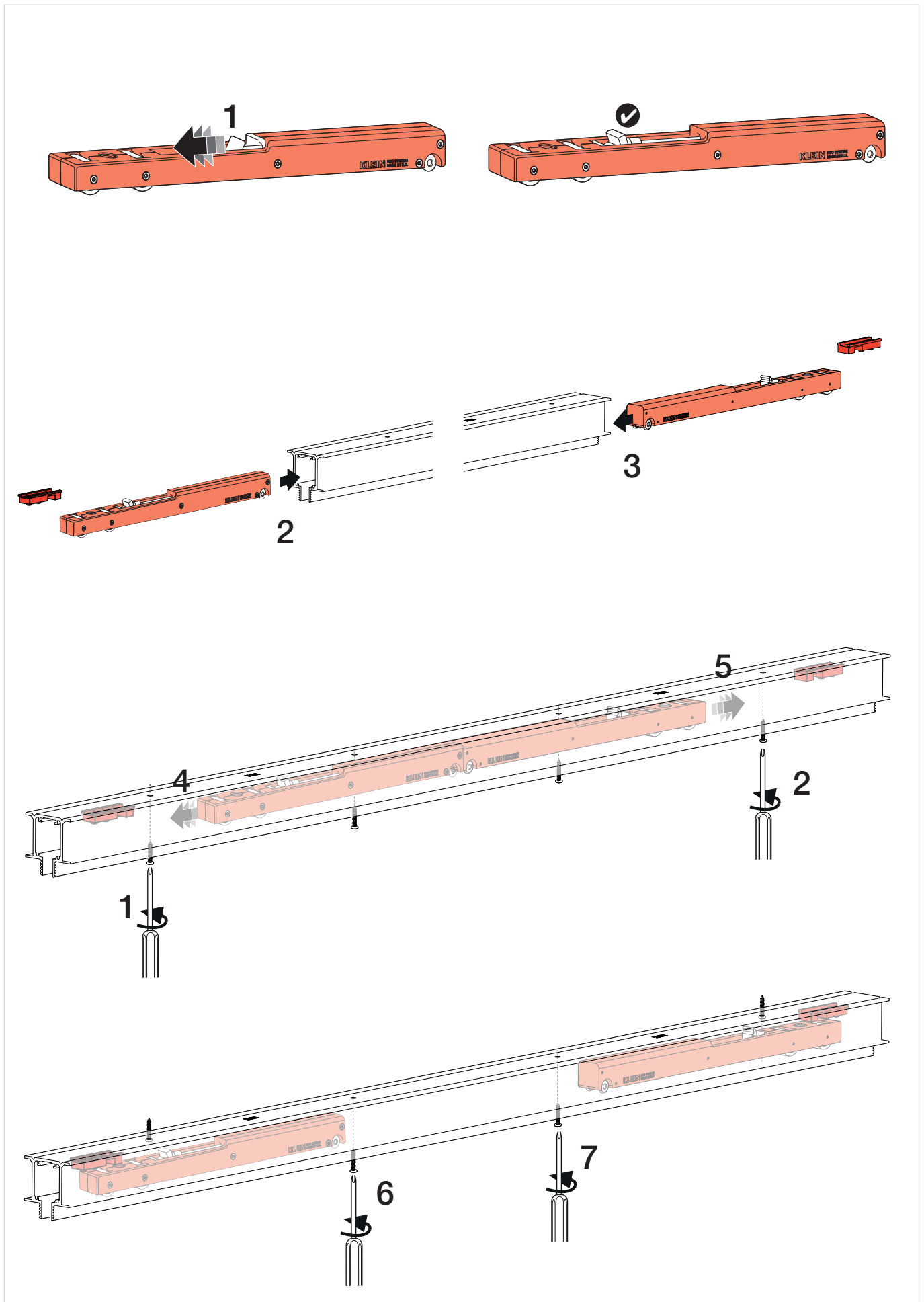
PERFIL LITE "T" / TRACK LITE "T"



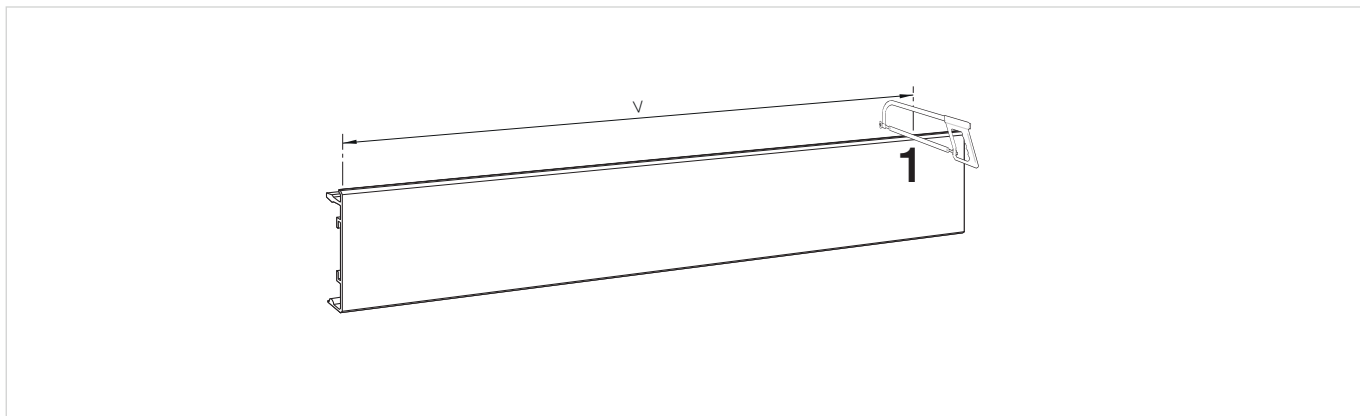
JUEGO DE ACCESORIOS LITEGLASS+ "T" / SET OF ACCESSORIES LITEGLASS+ "T"

<p>Arandela Washer</p>  <p>x 2</p>	<p>Guiador Guide</p>  <p>x 1</p>	<p>Tapas laterales End caps</p>  <p>x 2</p>
<p>Perno Bolt</p>  <p>x 2</p>	<p>Complementos del guiador Guide accessories</p>  <p>x 2</p>  <p>x 1</p>	<p>Tornillos Screws</p> <p>V10 (3/8") Torx T30 M6 x14 mm (9/16") DIN 7991 x 12</p> 
<p>Mordaza larga Long clamp</p>  <p>x 2</p>	<p>Tirador Handle</p>  <p>x 2</p>	<p>V12 (1/2") Torx T30 M6 x16 mm (5/8") DIN 7991 x 12</p> 
<p>Mordaza corta Short clamp</p>  <p>x 4</p>	<p>Clip Clip</p>  <p>x 8</p>	<p>Hoja de instrucciones Mounting instructions</p>  <p>x 1</p>
<p>Mordaza corta Short clamp</p>  <p>x 2</p>	<p>KSC KSC</p>  <p>x 2</p>	<p>Activador Activator</p>  <p>x 2</p>

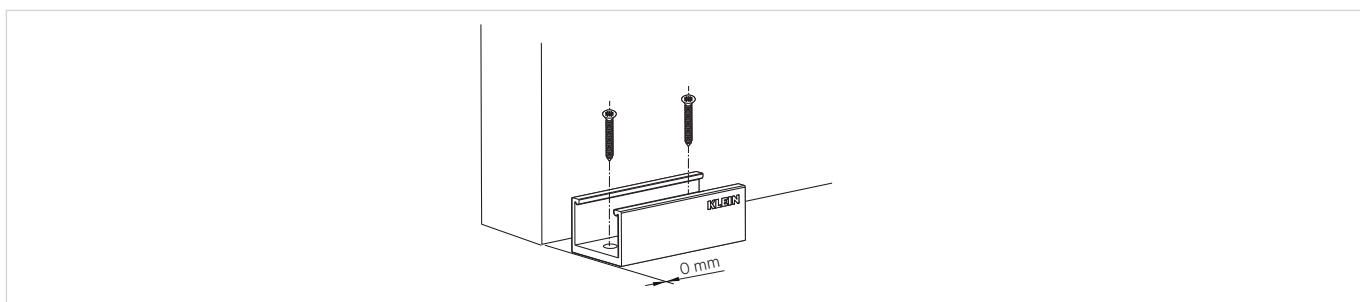
7 MONTAJE DEL PERFIL / UPPER TRACK MOUNTING



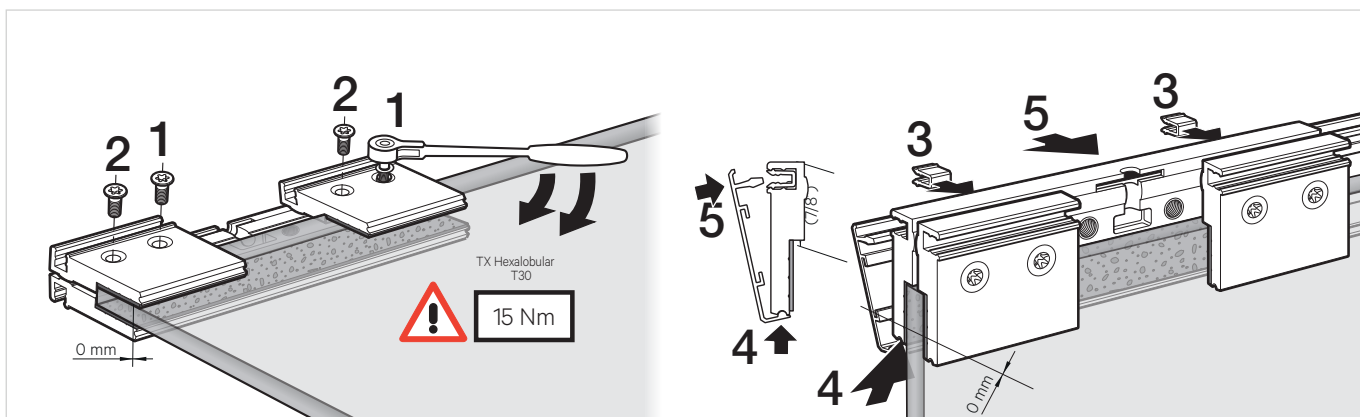
8 CORTAR LA GALERIA DE LA MORDAZA / CUT THE GUIDE CLAMP



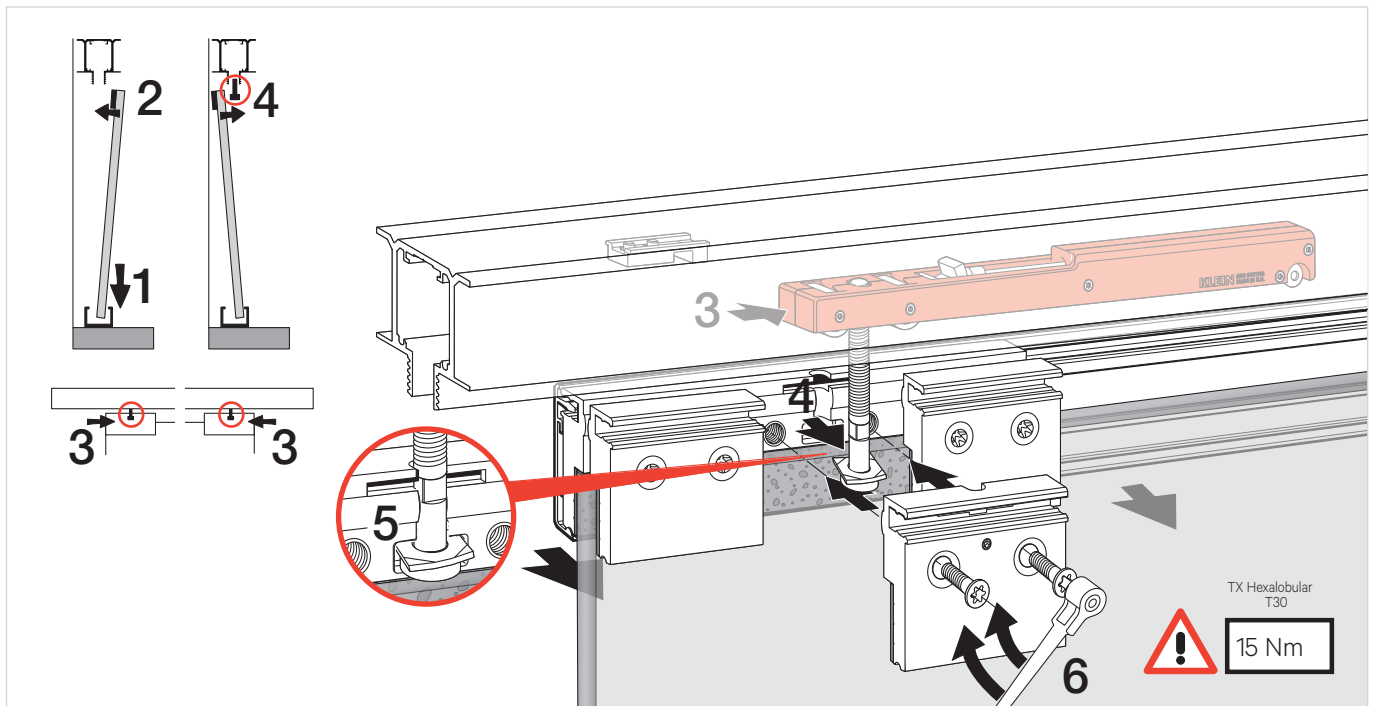
9 COLOCACIÓN DEL GUIADOR / GUIDE INSTALL



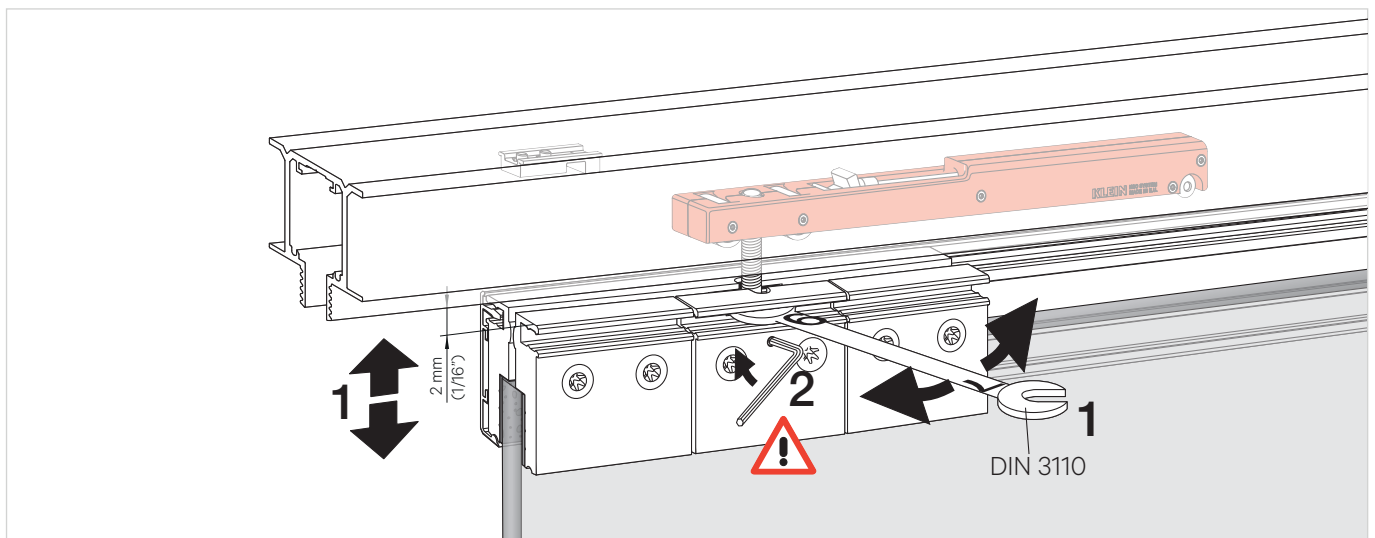
10 COLOCACIÓN DE LAS MORDAZAS / CLAMP INSTALL



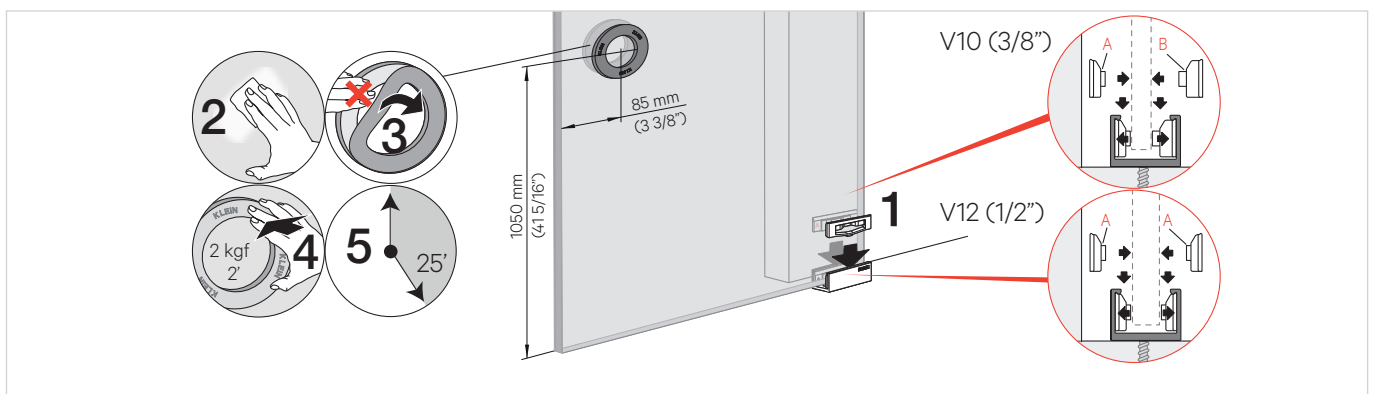
11 COLOCACIÓN DE LA PUERTA / DOOR MOUNTING



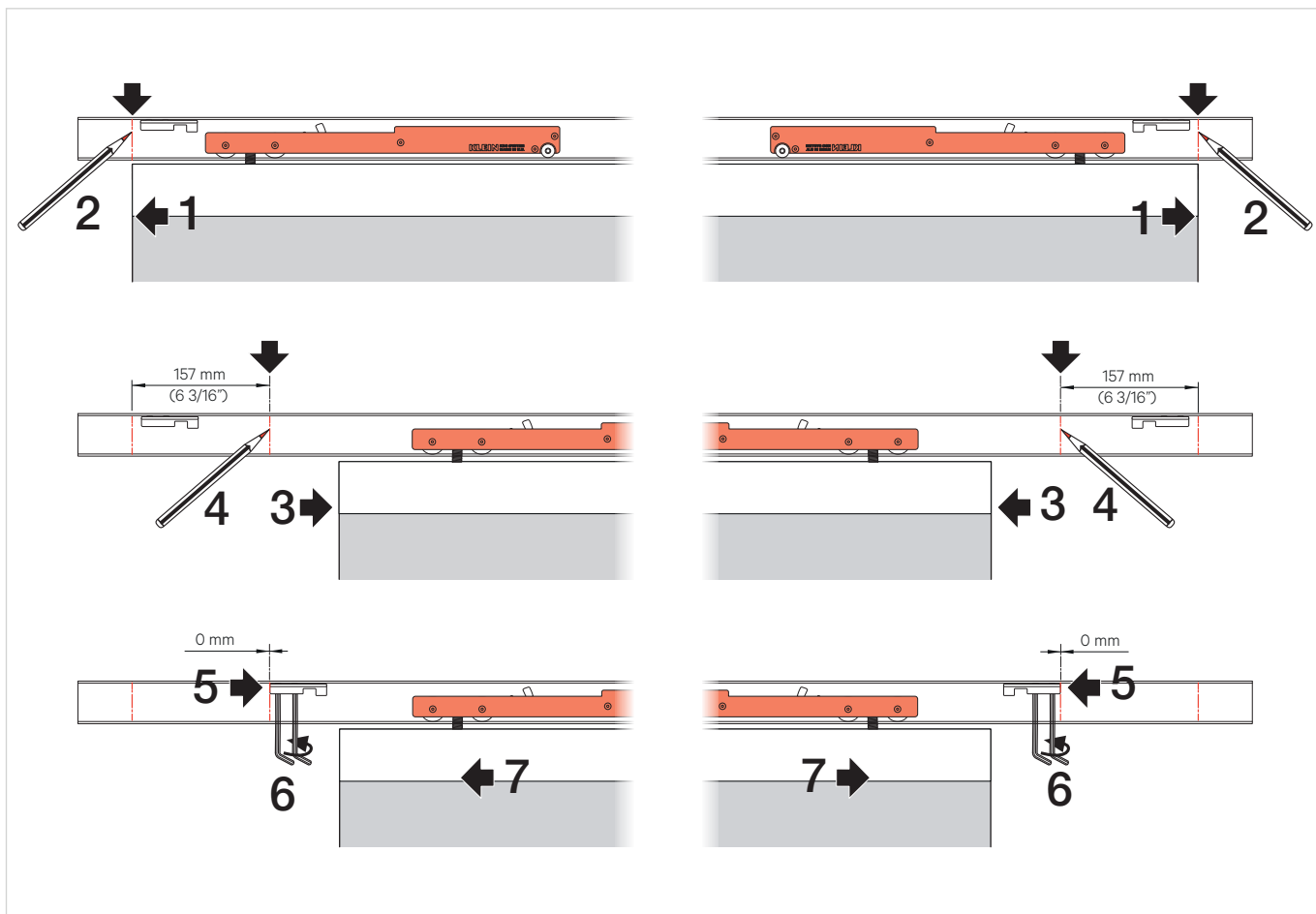
12 AJUSTE DEL PERNO / BOLT ADJUSTMENT



13 AJUSTE DEL GUIADOR Y COLOCACIÓN TIRADOR / GUIDE ADJUSTMENT AND HANDLE INSTALL



14 AJUSTE DE LOS KSC / KSC ADJUSTMENT



16 COLOCACIÓN DE LA GALERÍA FRONTAL Y TAPAS DE LAS MORDAZAS / VALANCE AND END CAPS FOR CLAMPS INSTALL

