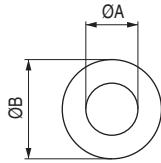
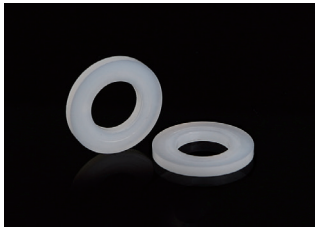

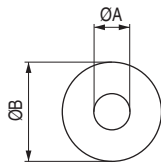



Arandela de nilón DIN 125



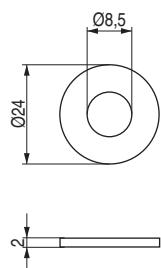
CÓDIGO	ØA	ØB	Material	Acabado	
1349.5	4	9	nilón	blanco	1.000
1349.7	5	10	nilón	blanco	1.000
1349.6	6	12	nilón	blanco	1.000
1349.8	8	16	nilón	blanco	1.000
1349.4	10	30	nilón	blanco	1.000
1349.10	12	40	nilón	blanco	1.000

Arandela de nilón DIN 9021



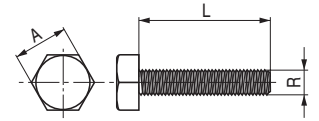
CÓDIGO	ØA	ØB	Material	Acabado	
1349.1	6	18	nilón	blanco	1.000
1349.2	8	24	nilón	blanco	1.000
1349.3	10	30	nilón	blanco	1.000


ARPLAS Arandela de plástico



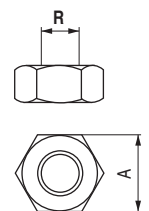
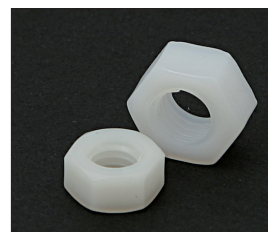
CÓDIGO	Material	Acabado	
2000.45	plástico	negro	5.000


DIN 933 NILÓN Tornillo hexagonal



Rosca	L LONGITUD mm.		CÓDIGO
M5 A = 8mm.	10	1.000	1349.11
	15	1.000	1349.12
	20	1.000	1349.13
M6 A = 10mm.	15	1.000	1349.14
	20	1.000	1349.15
	30	1.000	1349.16
	40	1.000	1349.17
M8 A = 13mm.	16	1.000	1349.18
	20	1.000	1349.19
	30	1.000	1349.20
	40	1.000	1349.21
M10 A = 17mm.	50	1.000	1349.22
	20	1.000	1349.23
	30	1.000	1349.24
	40	1.000	1349.25
	50	1.000	1349.26

DIN 934 NILÓN Tuerca hexagonal



CÓDIGO	R	A	Material	Acabado	
1349.27	M5	8	nilón	blanco	1.000
1349.28	M6	10	nilón	blanco	1.000
1349.29	M8	13	nilón	blanco	1.000
1349.30	M10	17	nilón	blanco	1.000