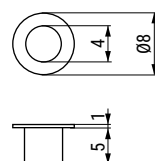


## PULGA




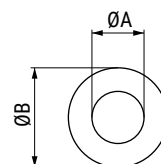
Código Code	Material	Acabado Finish	
195.13	plástico/plastic	blanco/white	5.000



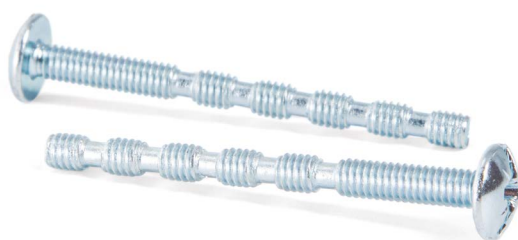
## DIN 125



Código Code	ØA	ØB	Material	Acabado Finish	
1349.5	4	9	nilón/nylon	blanco/white	1.000
1349.7	5	10	nilón/nylon	blanco/white	1.000
1349.6	6	12	nilón/nylon	blanco/white	1.000
1349.8	8	16	nilón/nylon	blanco/white	1.000
1349.4	10	30	nilón/nylon	blanco/white	1.000
1349.10	12	40	nilón/nylon	blanco/white	1.000



## NICO M4



Código Code	Material	Acabado Finish	
1032.1	acero/steel	zincado/zinc-plated	500

